

The Narrow Water Bridge

**NWBCN welcomes
Chris Hazzard MLA
Minister for Infrastructure
20 July 2016**

The Narrow Water Bridge

Appraise the minister of the economic development opportunity that the Narrow Water Bridge will provide.

Identify clearly the steps required to deliver the project in the immediate term.

NWB even more critical in a post-Brexit Ireland



Narrow Water Bridge
Community Network

The Narrow Water Bridge

6

NEWRY REPORTER,
WEDNESDAY, 20th JANUARY, 2016

local history

Ryan Sands ryan@newryreporter.com

The Narrow Water Bridge discussed four decades ago

By Ryan Sands
ryan@newryreporter.com

While recent government documents on both sides of the border paid lip service to the long mooted Narrow Water Bridge, a recent visit to the *Newry Reporter* archives illustrated just how long the proposal has been discussed.

The Irish Government's Capital Plan for 2016-21, released in October, stated that it was 'committed to the concept of the Narrow Water Bridge, which would provide a valuable North-South link between counties Louth and Down with potential to

Pictured at a meeting to discuss the possibility of a bridge at Narrow Water on January 13, 1976, are Deputy Joseph Farrell TD, Arthur Lockhart (Chairman of Newry and Mourne Council), John McEvoy (Vice-Chairman), PJ O'Hare (Chairman of Louth Council), and Senator Bernard Markay. R1603103

Library to host Rising talk

A talk by the author of the recently published 'The Abbey Rebels of 1916: A Lost Revolution' will be hosted in Newry City Library in early March.

Dr Fearghal McGarry, Reader in Irish History at Queen's University, Belfast, will talk about the revolutionary generation that grew out of Dublin's Abbey Theatre, which, through the guidance of literary luminaries like WB Yeats, Lady Augusta Gregory and JM Synge, was at the forefront of the Gaelic Revival leading up to the 1916 Rising.

Dr McGarry's talk will focus on the lives of the seven Abbey-backed characters

Looking back
This week
10 years

DOM SERVANT'S MISHAP NEAR NEWRY – A farm servant named Felix was in the employment of Mr Felix A. J.P., Drumherry, Whitcross, committed to the Newry Union workhouse on Thursday evening suffering from a broken leg. He was found lying on the road near the Egyptian Hotel where he had been thrown out of the house which he was in charge while on his way from Newry.

ENTERTAINMENT IN NEWRY (1906) – On Thursday evening, the kindness of Miss Quinn of Queen's Hotel has instituted the entertainment as one, the inmates of Newry workhouse were given a most enjoyable concert in the dining hall of the

10 years

Last day of this month the shutters of the Carrilough Village Police Station, one of the oldest in the country, more than 140 years there has been a new one there.

Today's Newry (County Down) Rural District Engineer William Ellison has announced that the big burst which led to the water supply crisis had been repaired that evening.

10 years

Today evening, His Eminence Cardinal O'Fiaich blessed and named the new St James' Church.

Nothing new.....

The Narrow Water Bridge

Government sources described the Narrow Water Bridge as a “vanity project” and said supports for the “real economy”, such as entrepreneurial projects, could gain more traction.

THE IRISH TIMES

5 November 2015

The Narrow Water Bridge is central to the development of a sustainable tourism strategy which will provide an economic lifeline to the people of the Carlingford Lough Area.

The Narrow Water Bridge

The economic opportunities that exist between now and 2020 are limited only by our willingness, determination and commitment to value tourism. Tourism is poised as a key driver of the economy.

NITB Campaigning for Tourism

By 2019, we will have become one of the premier tourism destinations on the island of Ireland.

Newry Mourne & Down DC



The Narrow Water Bridge

Every €1m of tourist expenditure helps to support 34 tourism jobs.

Every 55 international tourists help support one tourism job.

1,000 additional tourists support 18 jobs in the tourism industry



The Narrow Water Bridge

An Area of Outstanding Natural Beauty in counties Armagh and Down

A Special Area of Conservation and Protection on the county Louth side

Located roughly half-way between the two largest centres of population in Ireland



The Narrow Water Bridge



Drop of 18.8% in 2015 to 284,482!



Up 5.4% to 269,272 in 2015



4.4 million in 2015
expected to pass the 5 million mark in 2016

The Narrow Water Bridge



Record 25 million passengers in 2015

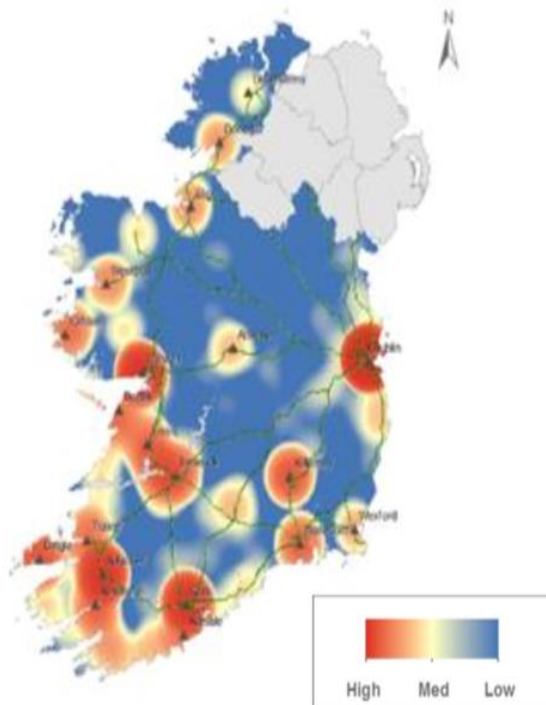
Up 15% (3.3 million)

22 new routes and extra capacity
on almost 40 existing services.



The Narrow Water Bridge

Overseas Holidaymakers : A Hotspot Map



Dublin 58%
Wild Atlantic Way 49%
Ireland's Ancient East 39%

The Narrow Water Bridge

**NM&D along with Derry & Strabane worst performers
among the new council areas.**

the detail June 2015

NITB South East weakest performing region.

NITB Tourist Industry Barometer September 2015

**Dundalk found to be the most deprived part of the border
region.**

McArdle Report 2011

The Narrow Water Bridge



Park Hotel Omeath

Ceased trading in 2007

**The Táin Holiday Village
Omeath**

Ceased trading in 2007



**Osborne Hotel
Warrenpoint**

Ceased trading in 1997

**Bennett's
Warrenpoint**

Ceased trading 2015





Narrow Water Bridge
Community Network

Tourist Activity

Activity Breakdown in 2014

000's

Hiking/cross country walking

1193

Cycling

286

Golf

172

Angling

157

Equestrian

79



Fáilte Ireland
National Tourism Development Authority

Walking

Almost a quarter of visitors to Ireland go walking

A quarter of a million French and German tourists took walking holidays in 2014

Market still underperforming compared with European Mainland



Fáilte Ireland
National Tourism Development Authority



Narrow Water Bridge
Community Network

Walking

After generations of slumber, many of the pilgrim paths of Ireland are reawakening. Some of Europe's oldest penitential walkways, most reaching back to pre-Christian times and, [...]— are again echoing to pilgrim footfall.



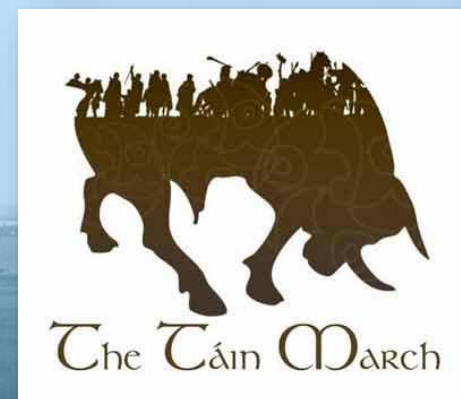
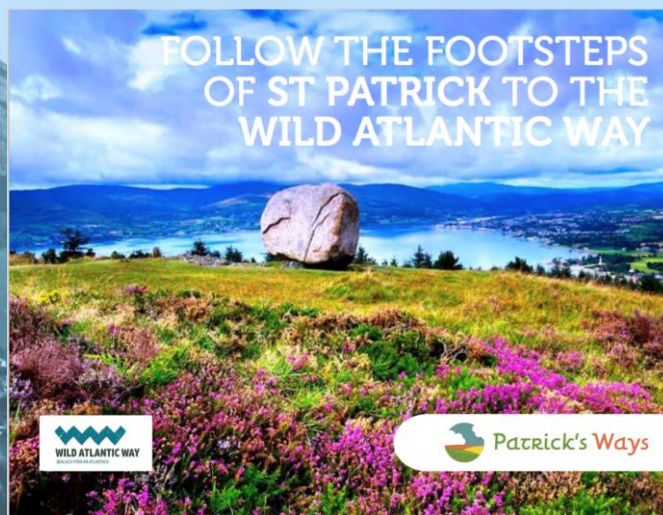
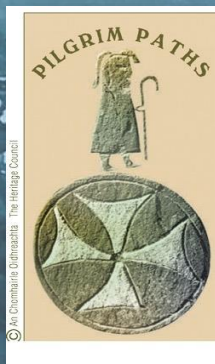
THE IRISH TIMES

4 October 2015



Narrow Water Bridge
Community Network

Walking





Narrow Water Bridge
Community Network

Cycling

European Cycle Market worth
€54 billion

Cycling Tourism highly developed where cycling
activity is highest e.g. Netherlands, Denmark
and Germany



Eurovelo Study 2012



Narrow Water Bridge
Community Network

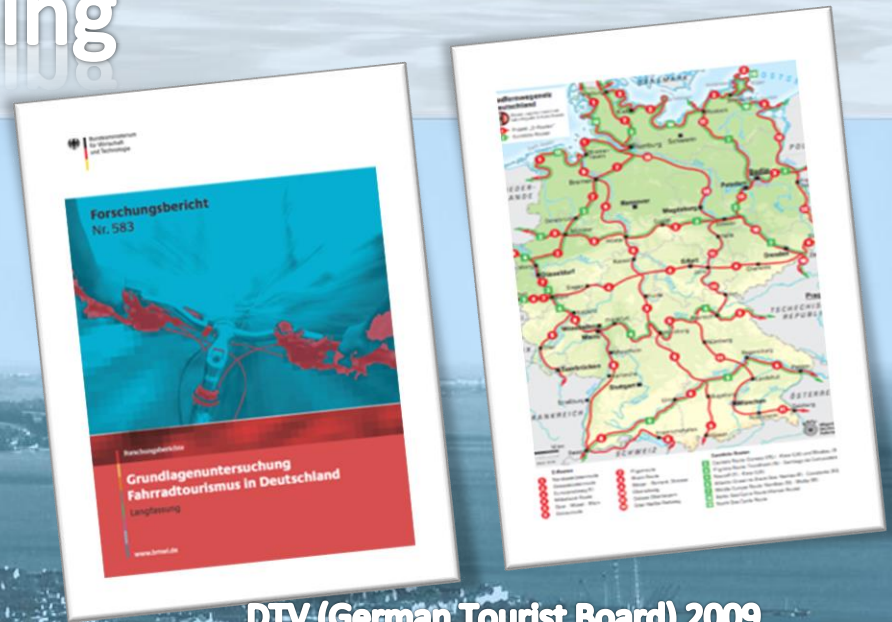
Cycling

Germany has currently
46,000 kms of cycle paths

7% of Germans took a cycling
holiday equating to 5 million cycle
trips involving at least 3 overnights
away

80% planning to take a cycle holiday
in 2015

Majority within Germany but half of
those surveyed ALSO planned
a trip abroad.



DTV (German Tourist Board) 2009



German Federal Cycling Association

Cycling

Germany has a potential market of 11 million cyclists according to 3000 person sample survey.

Fáilte Ireland 2013

They are young/middle aged
Affluent and educated
Stay an average of two weeks
High spenders





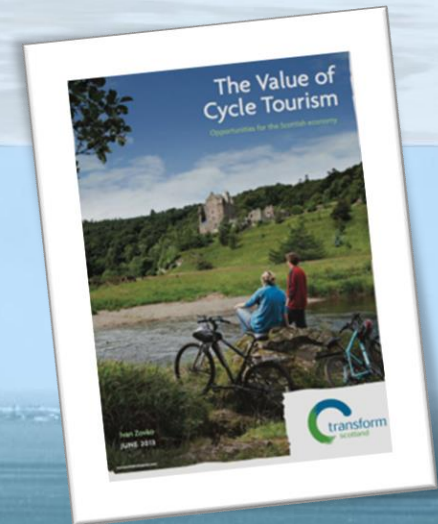
Narrow Water Bridge
Community Network

The Competition

Scotland reckons that cycling represents £58.5 million as share of total Scottish tourism GVA

Transform Scotland 2013

France with its Vélodyssée, the Atlantic cycling route and Loire à Vélo is a major pull. France fourth most popular destination after Netherlands, Austria and German-speaking Italy.



Recent Developments

Success of the Great Western Greenway
has created interest

265,000 visitors in 2014





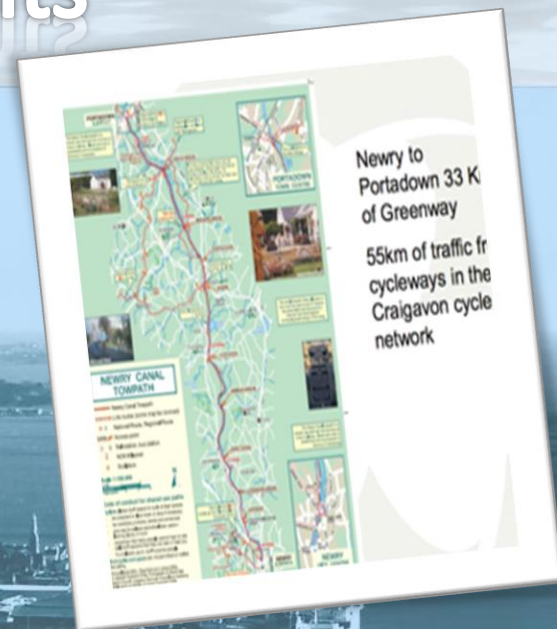
Narrow Water Bridge
Community Network

Recent Developments

Newry Canal Towpath

Greenway Carlingford - Omeath

Currently about 40 kms of traffic-free high quality cycle way

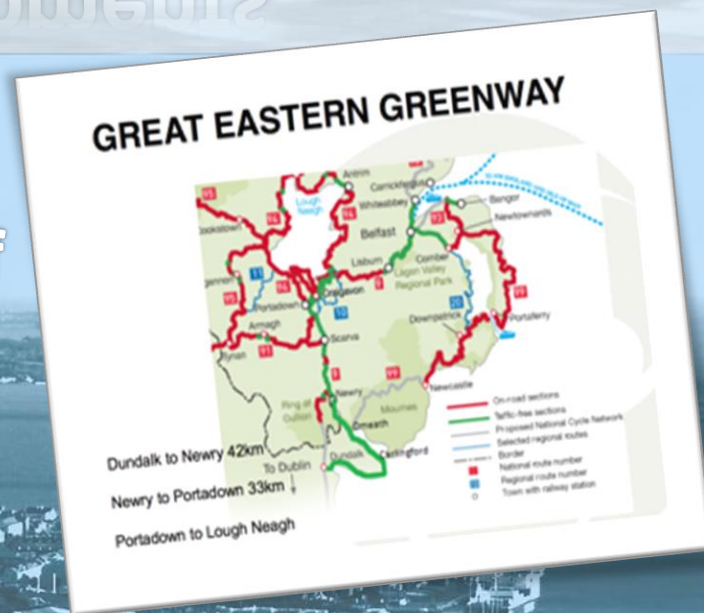
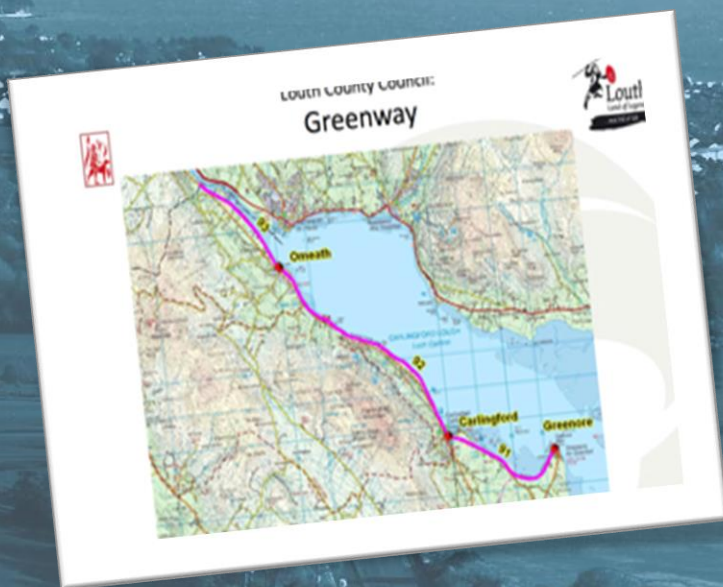




Narrow Water Bridge
Community Network

Recent Developments

A great desire to emulate success of
the Mayo greenway





Narrow Water Bridge
Community Network

Recent Developments

**Blueways / Greenways
Information Seminar**

NSMC Joint Secretariat

Armagh
30th April 2015



**The opportunity
in the North**

- Minister for Regional Development – a ‘cycling revolution’
- Increase in levels of cycling throughout Europe
- Interest of NSMC
- INTERREG V funding for ‘sustainable transport’
– €40 million



The greenway spine





Narrow Water Bridge
Community Network

Recent Developments



CYCLING
UNIT

The opportunity in the North



Department for
Regional
Development
www.dfdni.gov.uk



- Minister for Regional Development – a ‘cycling revolution’
- Increase in levels of cycling throughout Europe
- Interest of NSMC
- INTERREG V funding for ‘sustainable transport’
– €40 million



CYCLING
UNIT

The greenway spine



Department for
Regional
Development
www.dfdni.gov.uk





Narrow Water Bridge
Community Network

Recent Developments

The greenway spine



Department for
Regional
Development
www.drom.gov.uk



As Roinn Iompair
Turasoireachta agus Spóirt
Department of Transport,
Tourism and Sport



Ignores Warrenpoint
and South Down.

Fails to appreciate the unitary
feature that is Carlingford Lough.

Fragments Cooley, Mourne and
Gullion Region identified in tourist
strategies of both council areas.

The Narrow Water Bridge



We have a stand-alone and shovel-ready project.

Natural interconnector of Gullion, Cooley and Mourne.

Will provide a real economic lifeline for the Carlingford Lough Area.

The Narrow Water Bridge

Thank You